



# ZnT-9 Polyclonal Antibody

|                           |  |
|---------------------------|--|
| <b>Catalog No</b>         | YP-Ab-04281  |
| <b>Isotype</b>            | IgG  |
| <b>Reactivity</b>         | Human;Mouse;Rat  |
| <b>Applications</b>       | WB;ELISA   |
| <b>Gene Name</b>          | SLC30A9  |
| <b>Protein Name</b>       | Zinc transporter 9   |
| <b>Immunogen</b>          | The antiserum was produced against synthesized peptide derived from human SLC30A9. AA range:181-230  |
| <b>Specificity</b>        | ZnT-9 Polyclonal Antibody detects endogenous levels of ZnT-9 protein.  |
| <b>Formulation</b>        | Liquid in PBS containing 50% glycerol, 0.5% BSA and 0.02% sodium azide.  |
| <b>Source</b>             | Polyclonal, Rabbit,IgG   |
| <b>Purification</b>       | The antibody was affinity-purified from rabbit antiserum by affinity-chromatography using epitope-specific immunogen.  |
| <b>Dilution</b>           | Western Blot: 1/500 - 1/2000. ELISA: 1/20000. Not yet tested in other applications.  |
| <b>Concentration</b>      | 1 mg/ml  |
| <b>Purity</b>             | ≥90%   |
| <b>Storage Stability</b>  | -20°C/1 year   |
| <b>Synonyms</b>           | SLC30A9; C4orf1; HUEL; Zinc transporter 9; ZnT-9; Human embryonic lung protein; HuEL; Solute carrier family 30 member 9  |
| <b>Observed Band</b>      | 63kD   |
| <b>Cell Pathway</b>       | Membrane ; Multi-pass membrane protein . Nucleus . Cytoplasm . Cytoplasmic vesicle . Endoplasmic reticulum . Mainly in the cytoplasm (PubMed:10409434). Partial co-localization with endoplasmic reticulum (PubMed:28334855). .  |
| <b>Tissue Specificity</b> | Ubiquitously expressed in fetal and adult tissues and cancer cell lines.   |
| <b>Function</b>           | function:Plays a role in the p160 coactivator signaling pathway that mediates transcriptional activation by nuclear receptors (By similarity). Plays a role in transcriptional activation of Wnt-responsive genes.,similarity:Belongs to the cation diffusion facilitator (CDF) transporter (TC 2.A.4) family. SLC30A subfamily.,subunit:Interacts with GRIP1, ESR1 and AR.,tissue specificity:Ubiquitously expressed in fetal and adult tissues and cancer cell lines., |
| <b>Background</b>         | function:Plays a role in the p160 coactivator signaling pathway that mediates transcriptional activation by nuclear receptors (By similarity). Plays a role in transcriptional activation of Wnt-responsive genes.,similarity:Belongs to the cation diffusion facilitator (CDF) transporter (TC 2.A.4) family. SLC30A subfamily.,subunit:Interacts with GRIP1, ESR1 and AR.,tissue specificity:Ubiquitously expressed in fetal and adult tissues and cancer cell lines., |



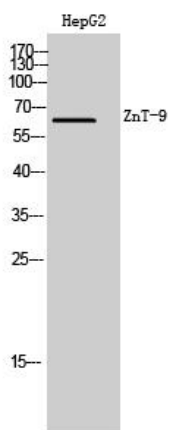
**matters needing attention**

Avoid repeated freezing and thawing!

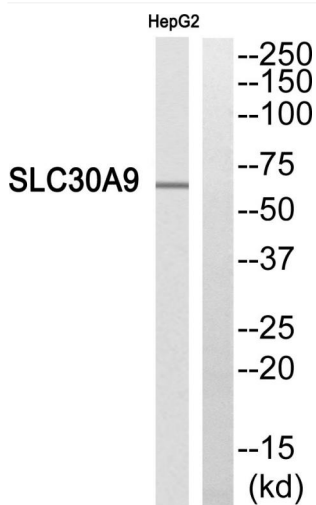
**Usage suggestions**

This product can be used in immunological reaction related experiments. For more information, please consult technical personnel.

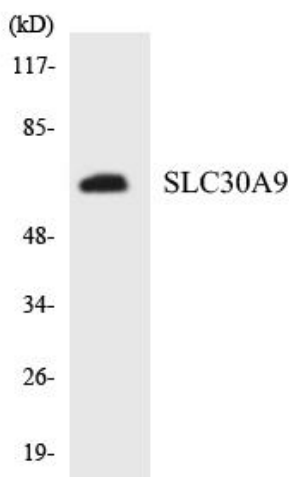
**Products Images**



Western Blot analysis of HepG2 cells using ZnT-9 Polyclonal Antibody. Secondary antibody(catalog#:RS0002) was diluted at 1:20000



Western blot analysis of SLC30A9 Antibody. The lane on the right is blocked with the SLC30A9 peptide.



Western blot analysis of the lysates from K562 cells using SLC30A9 antibody.